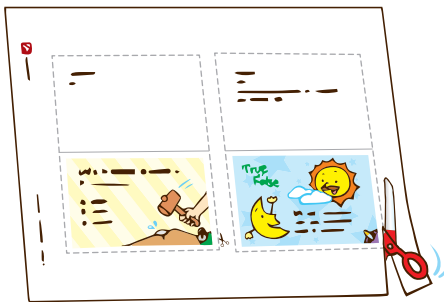


# TRIVIA

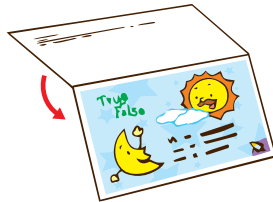
## • Questions •

Challenge yourself with the trivia questions!  
Follow the steps below to start.

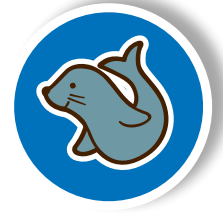
1 Cut.



2 Fold.



3 Play!





**Answer:**

California redwood tree

It can reach a height of 380 ft (about 116 m).  
That is taller than 20 giraffes standing on  
top of one another.



**Answer:**

false

Frosted glass is translucent.





**Answer:**

false

All planets in our solar system have moons except Mercury and Venus.

**True  
or  
False**

Earth is the only planet that has a moon.



**Answer:**

C. 6,000

About how many times does lightning strike Earth in one minute?

- A. 6
- B. 600
- C. 6,000





**Answer:**  
bamboo

**Solve the riddle.**

**While pandas love me,  
I'm used in many ways.  
People eat me and build with me.  
I can grow 3 ft (about 1 m) each day.  
What am I?**



**Answer:**  
D. spring force

**What causes Jack to pop out?**

- A. push force
- B. pull force
- C. box force
- D. spring force







**Answer:**

true

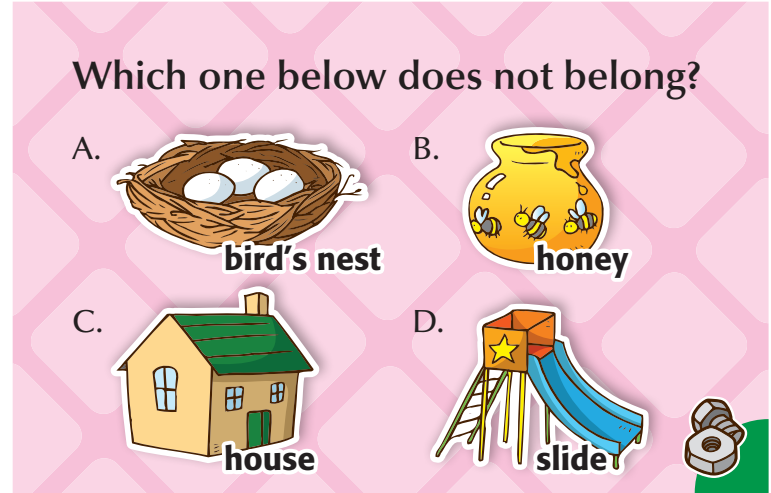
Rivers always flow downhill because gravity pulls the water downward.



**Answer:**

B. honey

The rest are structures.





**Answer:**

the sun

The sun is about 400 times bigger than the moon. They appear to be about the same size because the sun is much farther away from Earth than the moon.



Which one is bigger:  
the sun or the moon?



**Answer:**

false

Plants grow throughout their lives.



Like humans, plants stop growing  
at certain ages.





**Answer:**

false

Most lakes contain fresh water, but some are saltwater lakes, like Great Salt Lake in Utah, U.S.

**True  
or  
False**

Rain falls into lakes, so all lakes contain fresh water.



**Answer:**

C. deciduous tree

What do you call a tree that loses its leaves in the fall?

- A. autumn tree
- B. evergreen tree
- C. deciduous tree





**Answer:**

false

When snow melts, it becomes water. It does not disappear.



**Answer:**

B. screwdriver

This tool was called screw turner when it was first invented. What is it called now?

- A. driving wheel
- B. screwdriver
- C. bolt
- D. screw





**Answer:**

C. a mushroom

This underground mushroom was found in Oregon, U.S. It is so big that it could cover almost 1,700 football fields!

What is the largest living thing in North America?

- A. a tree
- B. a blue whale
- C. a mushroom



**Answer:**

A. about 5,000 years old

How old is the world's oldest living individual tree?

- A. about 5,000 years old
- B. about 1,000 years old
- C. about 500 years old





**Answer:**

B. frictional force



**Which force causes rug burns?**

- A. gravitational force
- B. frictional force
- C. rug force
- D. pull force



**Answer:**

C. several days

A light cottonwood tree seed covered in white, fluffy hair can stay in flight for several days.

**For how long can a seed be carried by wind at most?**

- A. several minutes
- B. several hours
- C. several days





**Answer:**

B. shoelaces and Velcro

They are both fasteners for shoes.

**Jackets**

**Shoes**

A. buttons and clothespins  
B. shoelaces and Velcro  
C. clips and zippers



**Answer:**

the fork

Which utensil was invented last?





**Answer:**

true

**True  
or  
False**

Mercury is the only metal that is in liquid form at room temperature.



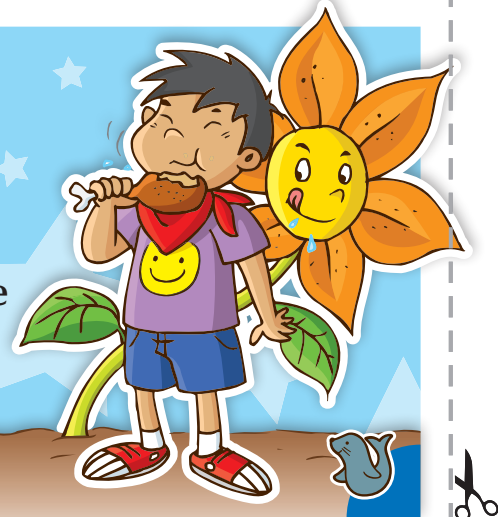
**Answer:**

true

Some plants, such as the Venus flytrap, are carnivorous. They trap insects and digest them.

**True  
or  
False**

Some plants are carnivorous.







**Answer:**

a coconut

**Solve the riddle.**

**I grow on a palm tree.  
I am hard as a stone.  
Inside I am white as snow.  
What am I?**



**Answer:**

C. about 500 years

**How long does it take  
for 1 in (about 2.5 cm)  
of topsoil to form in  
nature?**

- A. about 5 months
- B. about 5 years
- C. about 500 years

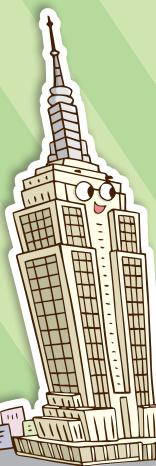




**Answer:**

B. 40 years

The Empire State Building held its record as the tallest building in the world from 1931 to 1971.



In 1931, the Empire State Building became the tallest building in the world. For how long did it hold this record?

- A. 10 months
- B. 40 years
- C. 102 years



**Answer:**

B. 134°F (about 57°C)

This temperature was recorded in Death Valley, California, U.S. in 1913.

What is the highest recorded temperature on Earth?

- A. 120°F (about 49°C)
- B. 134°F (about 57°C)
- C. 144°F (about 62°C)





**Answer:**

true

There are trees that are taller than a 15-story building.

**True  
or  
False**

Trees are the largest type of plant.



**Answer:**

true

**True  
or  
False**

A space shuttle travels faster than sound but slower than light.





**Answer:**

C. seat belts

Brakes are to cars as \_\_\_\_\_  
are to passengers.

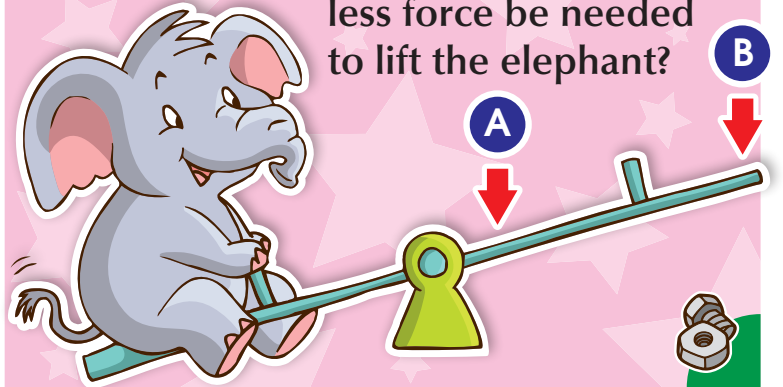
- A. cup holders
- B. headlights
- C. seat belts



**Answer:**

Point B

At which point would  
less force be needed  
to lift the elephant?



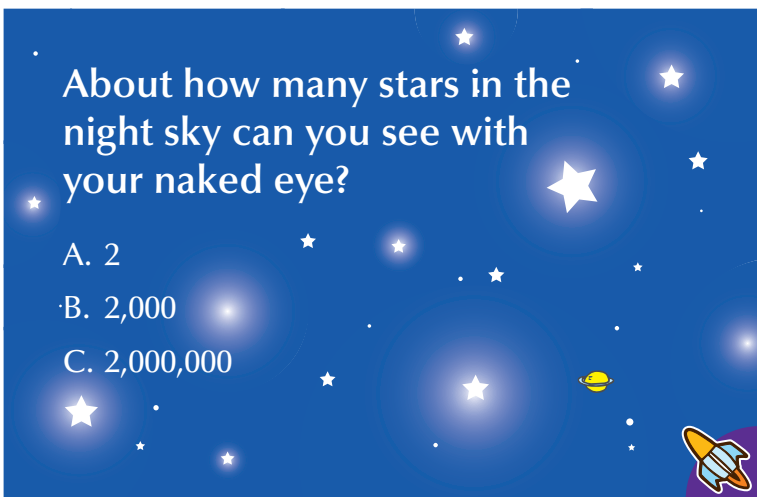


**Answer:**

B. 2,000

About how many stars in the night sky can you see with your naked eye?

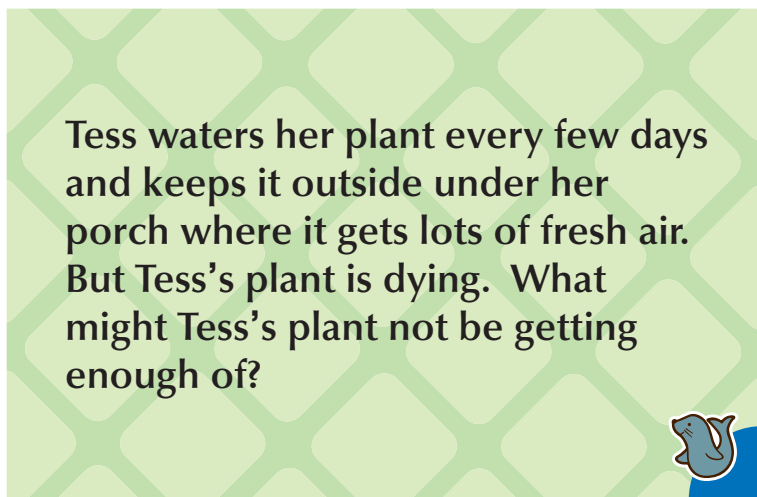
- A. 2
- B. 2,000
- C. 2,000,000



**Answer:**

sunlight

Tess waters her plant every few days and keeps it outside under her porch where it gets lots of fresh air. But Tess's plant is dying. What might Tess's plant not be getting enough of?





**Answer:**

false

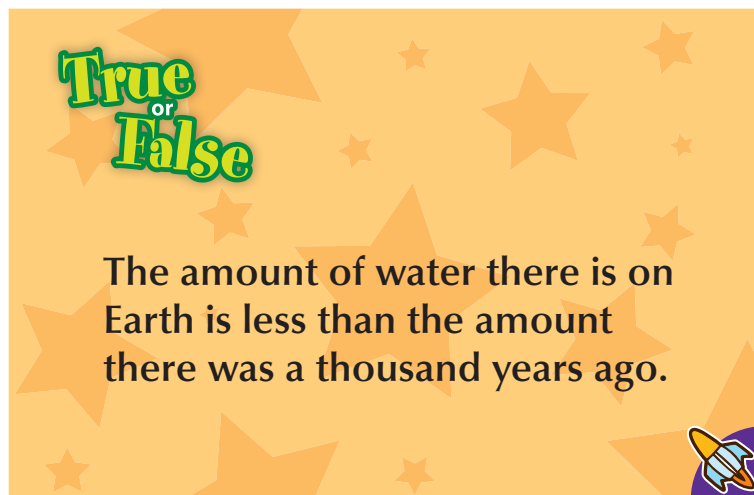
Mushrooms are neither plants nor animals. They are fungi.



**Answer:**

false

Earth has always had about the same amount of water.





**Answer:**

C. 350

Mt. Waialeale in Hawaii, U.S. has more rainy days than any other place in the world.

About how many days of rain a year does the rainiest place in the world have?

- A. 10
- B. 30
- C. 350



**Answer:**

a magnet

What is metal most attracted to?





**Answer:**

A. more than 5,000

**How many species of bacteria are there in a pinch of soil?**

A. more than 5,000

B. 50

C. 1



**Answer:**

in water

Sound travels about four times faster in water than in air.

**Does sound travel faster in air or in water?**



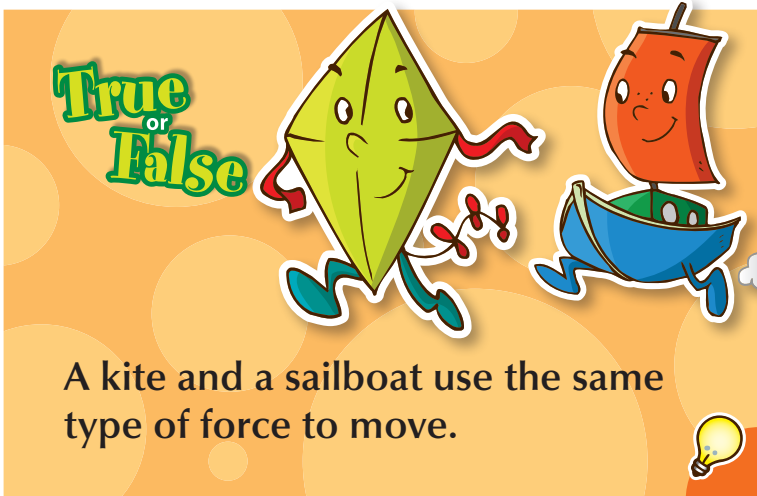




**Answer:**

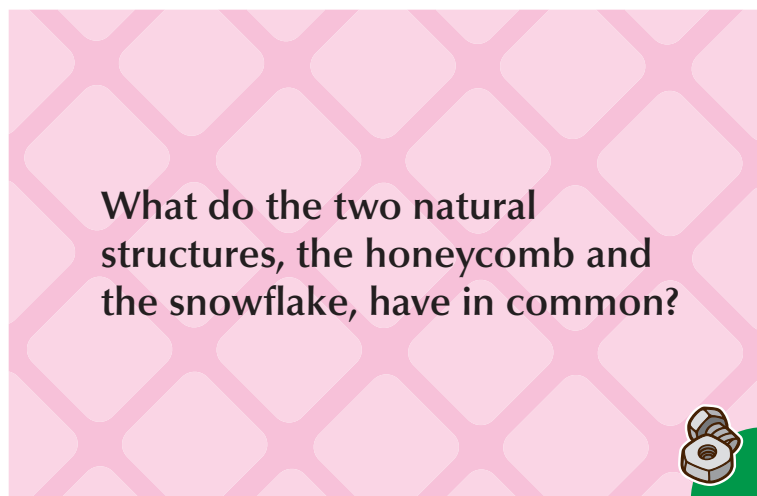
true

Kites and sailboats both use wind to move.



**Answer:**

Both structures have six sides.





**Answer:**

a penguin

**Solve the riddle.**

**My wings are wet.  
And this is why  
I use them to swim  
But not to fly.  
What am I?**



**Answer:**

B. so big that it can be seen from outer space

**The Great Barrier Reef is the world's biggest single structure made by living organisms. How big is it?**

- A. almost as big as a soccer field
- B. so big that it can be seen from outer space
- C. bigger than the Pacific Ocean





**Answer:**

true

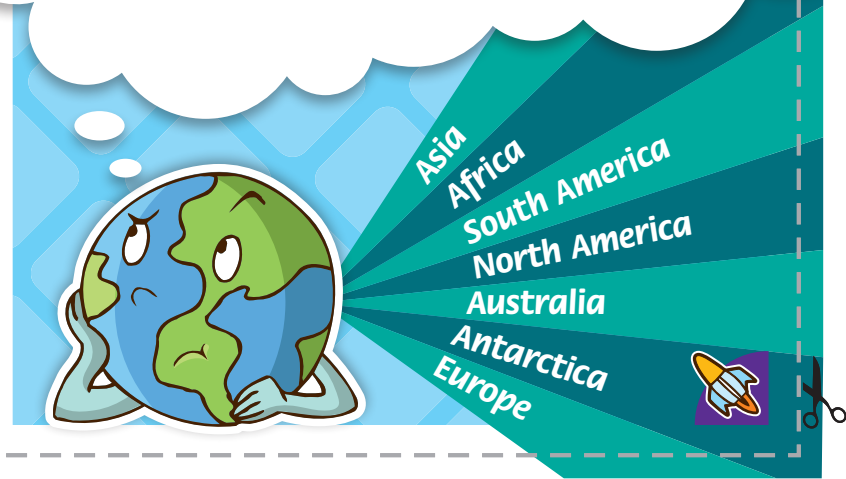
The leaves of a houseplant move to face a window, and young sunflowers follow the daily movement of the sun.



**Answer:**

Australia

Which continent is the smallest?





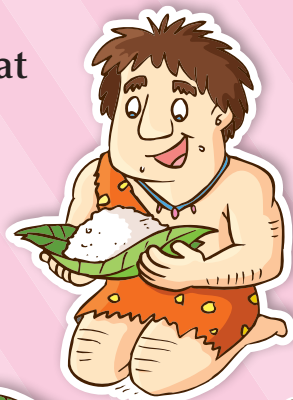
**Answer:**

B. seashells

Seashells were used as spoons and scoops.

In ancient times, what did people use as spoons?

- A. sharp rocks
- B. seashells
- C. coconut shells



**Answer:**

C. 1

A stand of oak trees produces 10,000 acorns in the fall. About how many of these acorns will become trees?

- A. 5,000
- B. 200
- C. 1





**Answer:**  
a tornado

**Solve the riddle.**

**I move fast.  
I can touch both the sky  
And the ground at the same time.  
Some people call me “Twister.”  
What am I?**



**Answer:**  
Trail C

Which trail is the best  
for beginners to ski?

